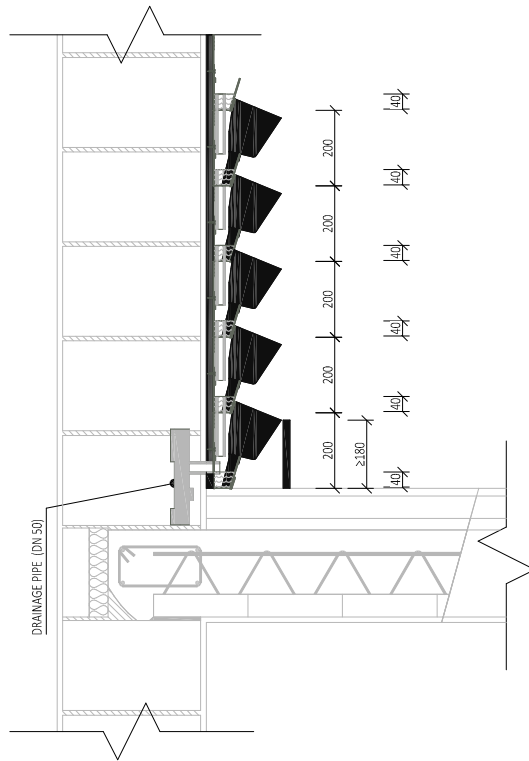
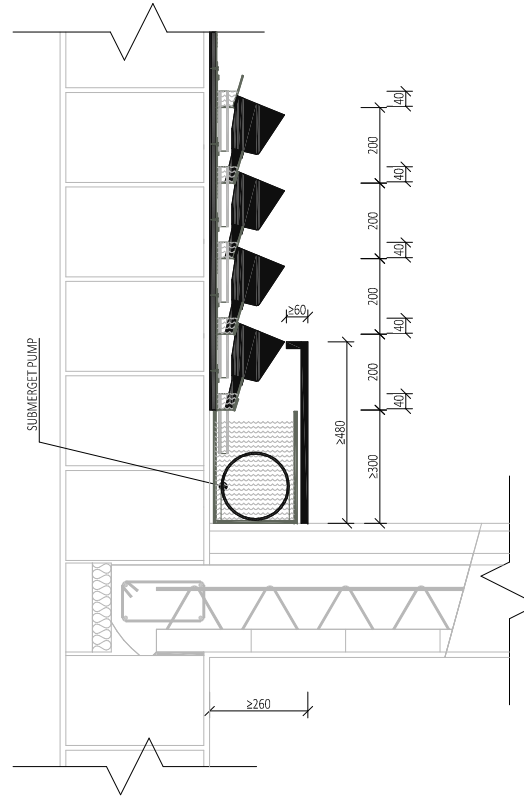


07_VERTICAL CASCADE GARDEN SPECIFICATION – IRRIGATION

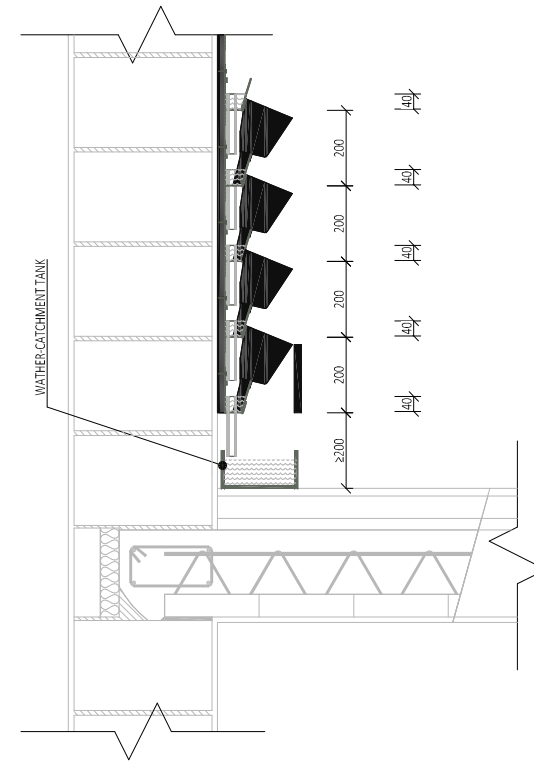
01_DRAIN CONNECTION



02_WATER RESERVOIR WITH PUMP



03_MANUAL IRRIGATION



VERTICAL CASCADE GARDEN SHOULD BE INSTALLED ONTO 18MM OSB BOARDS. OSB BOARDS SHOULD BE ATTACHED TO THE SUBSTRATE WALL DIRECTLY OR USING A UA ALU PROFILE (BEARING LOAD OF AT LEAST 60KG/M2). TROUGHS ARE ATTACHED ONTO THE OSB BOARDS USING TX20 SCREWS 500MM APART AND 100MM FROM THE EDGE. VISIBLE SIDE AND BOTTOM EDGE DETAIL IS MADE FROM 18MM MDF / SDK 15MM (INTERNAL ONLY).

OPTION 1 - AUTOMATIC IRRIGATION WITH DRAIN CONNECTION

- AUTOMATIC WATER IRRIGATION SYSTEM CONNECT TO THE MAIN WATER SUPPLY
- DRAIN CONNECTION THROUGH AN OVERFLOW PIPE INN THE BOTTOM TROUGH

OPTION 2 - AUTOMATIC IRRIGATION WITHOUT DRAIN CONNECTION

- WATER RESERVOIR IS FILLED EITHER MANUALLY OR AUTOMATICALLY THROUGH AN IRRIGATION SYSTEM CONNECTED TO THE MAIN WATER SUPPLY (APPROX.12,5L WATER / 14 DAY / 1M2 TROUGH)
- WATER DISTRIBUTION THROUGH A PUMP MECHANISM

OPTION 3 - MANUAL IRRIGATION WITH NO WATER CONNECTION

- MANUAL IRRIGATION INTO THE TOP VERTICAL CASCADE GARDEN TROUGH (APPROX. 2,5L WATER / 1LM TROUGH)
- WATER - CATCHMENT TANK - PLACED UNDERNEATH THE WALL DURING IRRIGATION CYCLE ONLY