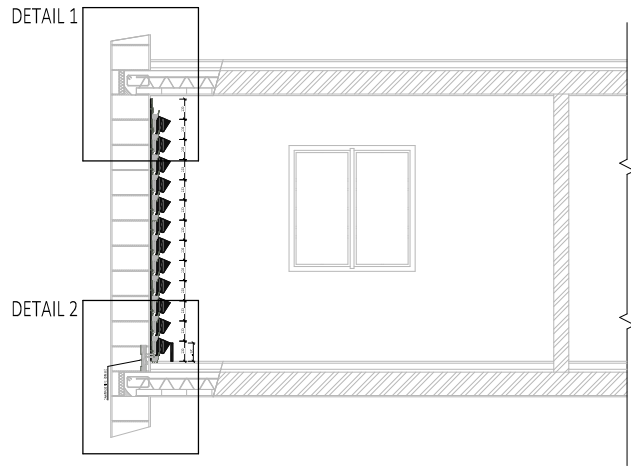
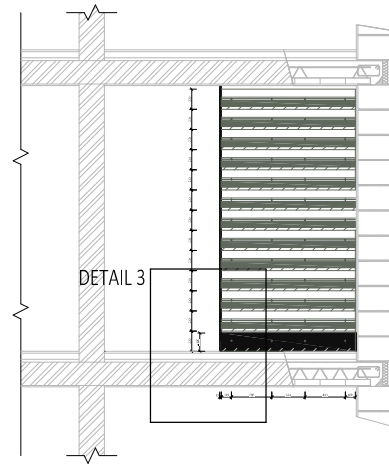


01_VERTICAL CASCADE GARDEN SPECIFICATION – STAND ALONE WALL

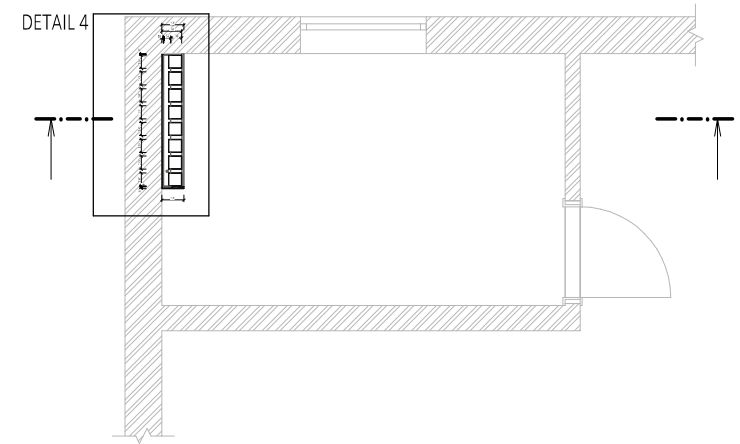
SECTION VIEW



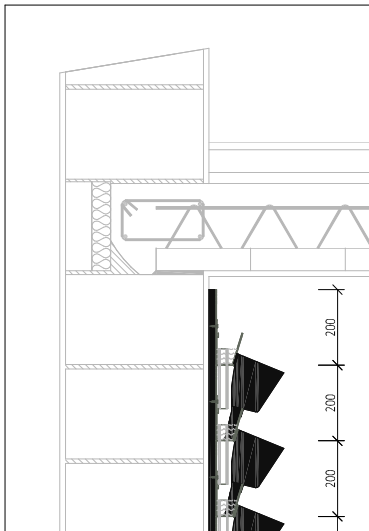
FRONT ELEVATION



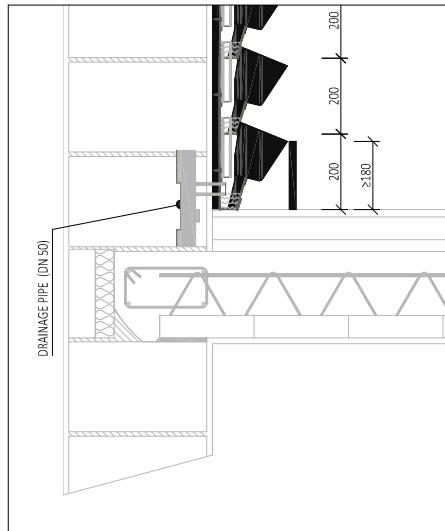
PLAN VIEW



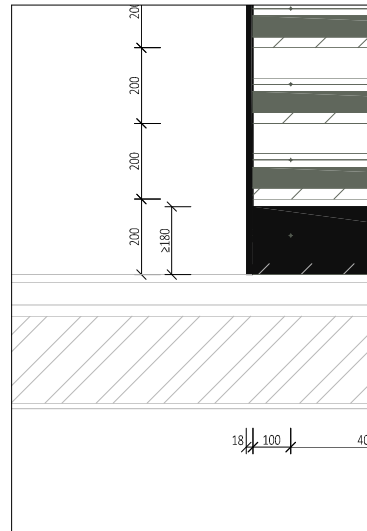
DETAIL 1



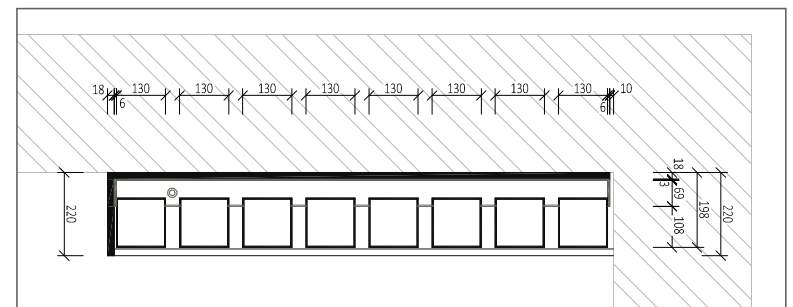
DETAIL 2



DETAIL 3



DETAIL 4



VERTICAL CASCADE GARDEN SHOULD BE INSTALLED ONTO 18MM OSB BOARDS.
 OSB BOARDS SHOULD BE ATTACHED TO THE SUBSTRATE WALL DIRECTLY OR USING A UA ALU PROFILE (BEARING LOAD OF AT LEAST 60KG/M²).
 TROUGHS ARE ATTACHED ONTO THE OSB BOARDS USING TX20 SCREWS 500MM APART AND 100MM FROM THE EDGE.
 VISIBLE SIDE AND BOTTOM EDGE DETAIL IS MADE FROM 18MM MDF / SDK 15MM (INTERNAL ONLY).